



Securafix®



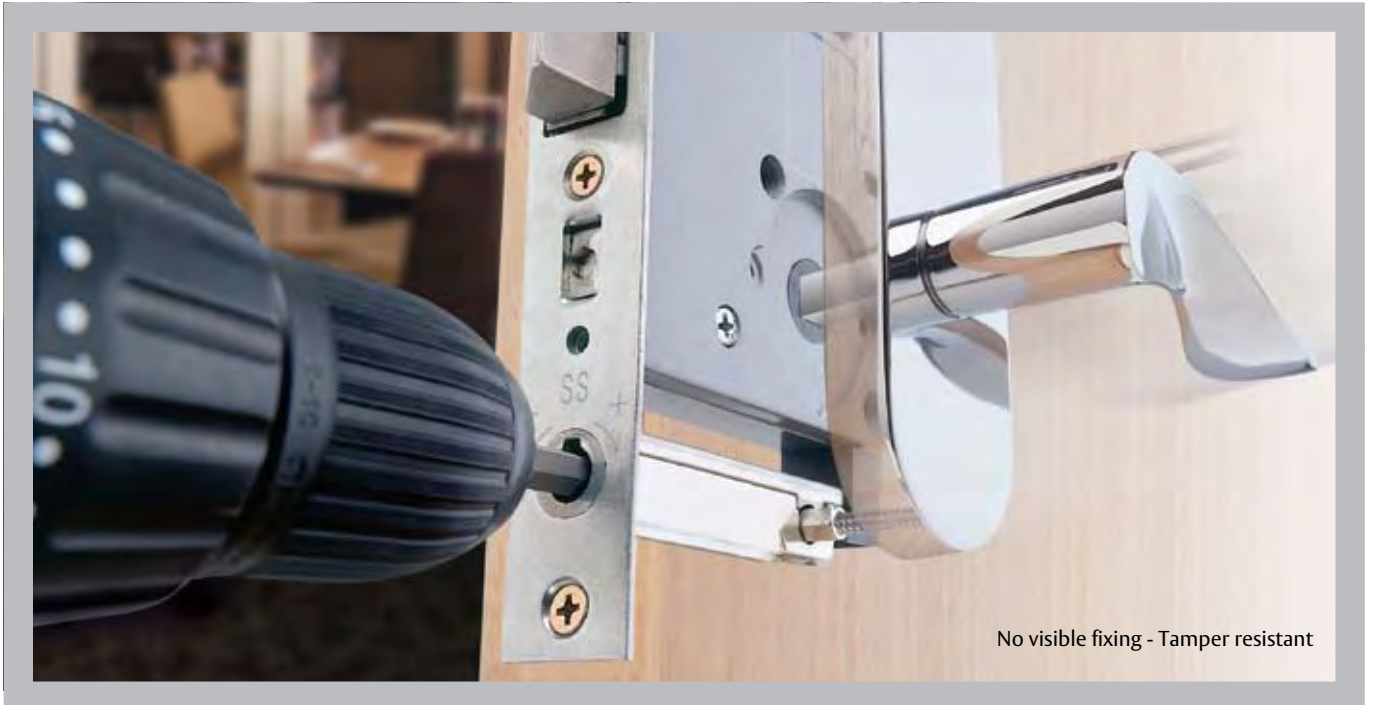
ASSA ABLOY

ASSA ABLOY, the global leader  
in door opening solutions

## Contents

telephone +61 2 8966 5966  
www.keelerhardware.com.au

<b>General information</b>	<b>1</b>
<b>3670 Securafix Series</b>	<b>3</b>
<b>1800 Series Square End Mortice Latch Furniture with Securafix</b>	<b>4</b>
<b>2800 Series Round End Mortice Latch Furniture with Securafix</b>	<b>5</b>
<b>Ordering Procedure</b>	<b>6</b>



**Concealed Fixing System**

Securafix® concealed fixing system provides easier installation and better security. Securafix® has been designed to secure the furniture positively to the door using a concealed fixing method that increases security. This is combined with a mechanism that can be positively locked to prevent the furniture from loosening, even when used continuously. Securafix® is the ideal choice for high usage areas, where wear and tear can be a problem.

The innovative design means screws do not need to be cut to size. Plates and screws will not be damaged by drill slips during installation. The safety clutch prevents screw threads from being stripped and over tightened.

Designed for optimum function as well as form, this Australian designed, Australian made system not only looks attractive, but is tamper resistant. With no visible fixing, Securafix® can add a luxury finish to any room.



Improved installation



No damage to furniture



## 3670 Securafix Series

### Application

Where added security is required a wide range of security cylinder mortice locks are available. Suitable for heavy duty use in industrial and commercial buildings, institutions, clubs, schools, hospitals, hotels and similar buildings.

### Features & Specifications

#### Patent Pending

All 3670 Series cylinder mortice locks are built from top quality materials, with the easy action and solid feel of the world's finest locks, offering a unique fixing method which allows for concealed fixing on both sides of the door.

#### Case & Cover Plates

High purity zinc alloy material cases and stainless steel cover plates. Brass plates provided for plated finishes.

#### Backset

60 mm standard backset.

#### Latchbolts

Latchbolts are 15 mm, stainless steel. Deadlatching is achieved by an auxiliary stainless steel latchbolt. This auxiliary bolt retracts when the main latchbolt is withdrawn when the door is closed.

#### Deadbolts

Deadbolts are 19 mm, stainless steel.

#### Springs

High-grade spring steel material, corrosion protected.

#### Cylinder Retaining Pin

Hard-drawn spring steel wire, corrosion protected.

#### Door Thickness

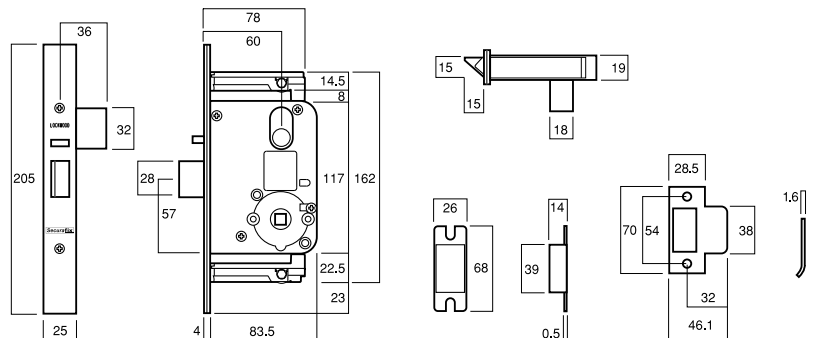
32 to 44 mm. Locksets to suit thicker doors are available on application.

#### Security Rating

Standard 3670 Series Cylinder Mortice Locks conform with Level S2 (Physical Security) Australian Lock Standard (AS-4145.2-1993). Conformance with Level S3 (Physical Security) is available upon request.

#### Durability Rating

All 3670 Series Cylinder Mortice Locks conform with level D3 (Durability) Australian Lock Standard (AS-4145.2-1993).



### Fire-rated

The Lockwood 3670 Series Cylinder Mortice Locks have been successfully fire tested on fire door assemblies up to 4 hours (depending on type of door) in accordance with the requirements of Australian Standard AS1905.1:2005 Part 1: Fire-resistant doorsets.

### Keying

#### Special Keying

Can be keyed alike, master keyed, grand master keyed, maison keyed or construction keyed in Lockwood security keying systems.

#### Standard Finishes

Chrome Plate	CP
Satin Chrome	SC
Polished Brass	PB

#### Electric Lock

Available in an electric lock version. 60 mm standard backset.



## 1800 Series Square End Mortice Latch Furniture with Securafix

### Description

For a smart look choose this rectangular plate with bevelled edges and corners and concealed fixing on both the outside and inside plate.

### Application

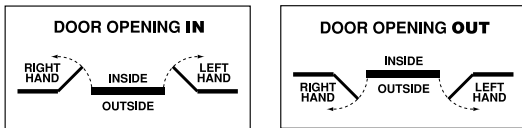
Lockwood 3670 Series Mortice Latches.

### Features & Specifications

#### Handing

All plates and levers are handed and are ordered as half sets. (Refer to Ordering Procedure.)

#### Handing Chart



#### Dimensions

166 x 48 x 12mm

#### Fixing

Lockwood plates are designed to fit back to back which are tightened from the front of the mortice lock by a hex key.

#### Door Thickness

Standard plates suit door thickness between 32 and 44 mm. Refer to ordering procedure for information regarding plates for use on thicker doors.

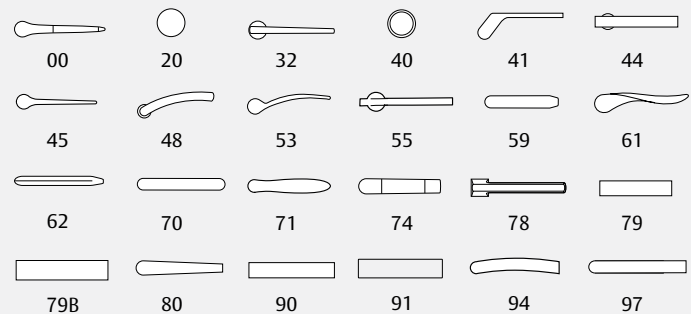
#### Standard Finishes

Chrome Plate	CP
Polished Brass	PB
Satin Chrome	SC

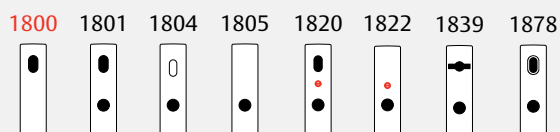


- FIRE RATED
- S3 HIGH SECURITY
- D3 DURABILITY
- ANTI-CORROSION

#### Levers and Knob to Suit



#### Plates & Functions



#### Legend

Cylinder Hole		LED	
Turnknob		Lever	
Prox & Cylinder Hole		Disabled	

## 2800 Series Round End Mortice Latch Furniture with Securafix

### Description

A beautifully curved brass plate with bevelled edges and corners and concealed fixing on both the outside and inside plate.

### Application

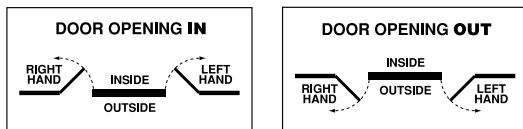
Lockwood 3670 Series Mortice Latches.

### Features & Specifications

#### Handing

All plates and levers are handed and are ordered as half sets. (Refer to Ordering Procedure.)

#### Handing Chart



#### Dimensions

166 x 48 x 12mm

#### Fixing

Lockwood plates are designed to fit back to back which are tightened from the front of the mortice lock by a hex key.

#### Door Thickness

Standard plates suit door thickness between 32 and 44 mm. Refer to ordering procedure for information regarding plates for use on thicker doors.

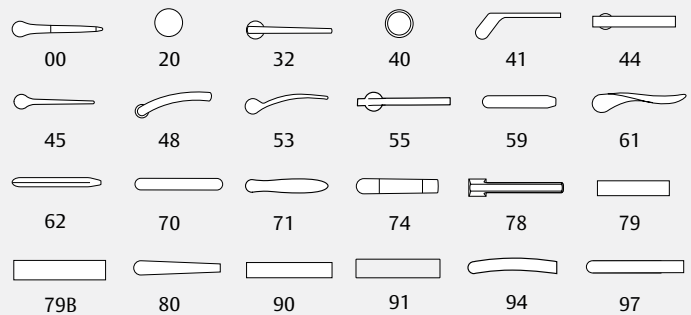
#### Standard Finishes

Chrome Plate CP  
Polished Brass PB  
Satin Chrome SC

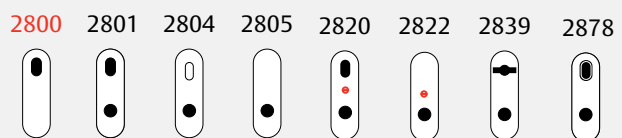


- FIRE RATED
- HIGH SECURITY
- DURABILITY
- ANTI-CORROSION

#### Levers and Knob to Suit



#### Plates & Functions



#### Legend

Cylinder Hole		LED	
Turnknob		Lever	
Prox & Cylinder Hole		Disabled	

**3670 Securafix Series Ordering Procedure**

Sample Part Number 3672XTRSC is made up of several sections. Choose your product by selecting an option from each section.

For example:

<b>Backset</b>	<b>Functions</b>	<b>Sub Functions</b>	<b>Handing</b>	<b>Finish</b>
3	672	XT	R	SC

<b>Backset</b>	<b>Sub Functions</b>	<b>Handing</b>
60mm 3	e.g. X= Outside T=Inside Locking Cylinder W cam W Latching Cylinder X cam X Locking Cylinder Z cam Z Locking Cylinder M cam M Turn button Adaptor T No Sub Function -	Right R Left L
<b>Functions</b>		<b>Finish</b>
Vestibule Lock 672 Combination Lock 674		Chrome Plate CP Satin Chrome SC Polished Brass PB

**Mortice Latch Furniture with Securafix**

<b>Plate</b>	<b>Function</b>	<b>Securafix</b>	<b>Lever/ Knob</b>	<b>Handing</b>	<b>Finish</b>	<b>Door Thickness</b>
18	01	SF	00	L	SC	--

<b>Securafix</b>	<b>Lever/Knob</b>	<b>Handing</b>	<b>Door Thickness</b>
1800 Series Square End Plates 18 2800 Series Round End Plates 28	00 20 32 40 41* 44 45 48* 53* 55 59 61* 62 70 71 74 78 79 79B 80 90 91 94* 97	Left Hand L Right Hand R	32-45mm no suffix 45-55mm 55 55-65mm 65 65-75mm 75
<b>Function</b>		<b>Finish</b>	<b>Note: Applies to Right Handed plates only.</b>
Cylinder & Lever 01 Turnknob & Lever 04 Lever Only 05 Cylinder, Lever & LED 20 Lever & LED 22 Disabled Turn & Lever 39 Prox, Cylinder & Lever 78		Chrome Plate CP Satin Chrome SC Polished Brass PB	
<b>Securafix</b>			
Securafix SF			

\* Denotes handed levers