



Floor Closers



ASSA ABLOY

ASSA ABLOY, the global leader
in door opening solutions

Contents

7750 Series Floor Closer	1 - 3
8800 Series Floor Closer	5 - 6
Pivot Door Sets	7

7750 Series Floor Closer

The Lockwood 7750 Series Floor Closer range has been specifically designed to meet most situations where pivoted single or double action doors up to 300kg require positive and consistent operation.

Innovative design enables flexibility over a wide range of applications.

Designed and manufactured to world class standards ensures the highest possible quality, efficient and reliable performance.

Multi functional designs offer the specifier, stockist or the installer outstanding versatility and low inventory levels.

Features & Specifications

Power Adjustable

- All models are power adjustable sizes 3 to 6 which allows adjustment at installation to suit most site conditions. Closing force ranges from 24 Nm to 60 Nm

Suitable for doors

- Up to 1400mm in width (refer to selection chart)
- Up to 2500mm in height Minimum door thickness 40mm

Door Weight

- Up to 300kg

Door Controls (175° opening in both directions)

- Two independent adjustment valves provide full hydraulic control
- Closing from approx. 175° to 15°
- Latching from approx. 15° to 0°

Hold open

- 90° and 105°

Non Hold Open (Fire Rated)

- Comes with non-adjustable mechanical backcheck at approx 70°

FIRE RATED

The Lockwood 7750 Series Floor Closer has successfully been fire tested on fire door assemblies in accordance with Australian Standard AS 1905.1 - 2005: Fire-resistant doorsets.

Built in Pressure Relief Valve

- To protect against abuse



Adjustment within Cement Box

- Large range of adjustment to suit most site conditions (see limiting dimensions on page 3)

Body

- Cast iron

Cement Box

- Hot zinc plated steel

Interchangeable Spindle

- A large range of spindles are available from +5 to +30mm to meet door heights above thresholds or uneven floor conditions

Cover Plate Finishes

Satin Stainless Steel (Standard) SSS

Polished Stainless Steel
(Order cover plate separately) PSS

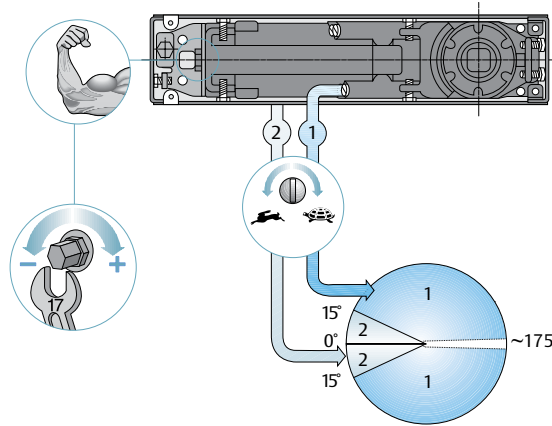
Polished Brass
(Order cover plate separately) PB

7750 Series Floor Closer

Power and Closing Speed

Turn 17 mm hex force adjuster clockwise to increase power. Turn anti-clockwise to decrease power. Starting from the minimum power, with 10 complete turns maximum power is reached.

Thermostatic valves 1 and 2 control independently the general closing speed from 175° to 15° and the final closing from 15° to 0° (constant, damping or latching). Starting from valve closed, maximum speed is reached with three full turns anti-clockwise.



Recommended Door Size

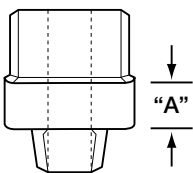
Closing Force	Door Size	Door Weight
Min. power 3 = 24 Nm	min. 850 x 2300	Kg 300
Max. power 6 = 60 Nm	max. 1400 x 2500	Kg 300

Part Numbers

*For a complete Door Kit order from **A - Hydraulic Units** + **B = Door Kits**.

A - Hydraulic Units		B - Door Kits	
Hydraulic Units	Door Kit	1. Door kit includes top pivot and bottom strap	7750-579
7755H90SSS = 90°	1 or 3	2. Fire Rated door kit includes top pivot and bottom strap	7750-584
7750H105SSS = 105°	1 or 3	3. Non handed Offset Arm Kit for single acting doors	7750-30SIL
7752NBCSSS = X	2 or 3	Cover Plate Finishes	
		Satin Stainless Steel (Standard)	SSS
		Polished Stainless Steel (Order cover plate separately)	PSS
		Polished Brass (Order cover plate separately)	PB

Extended Spindle Range



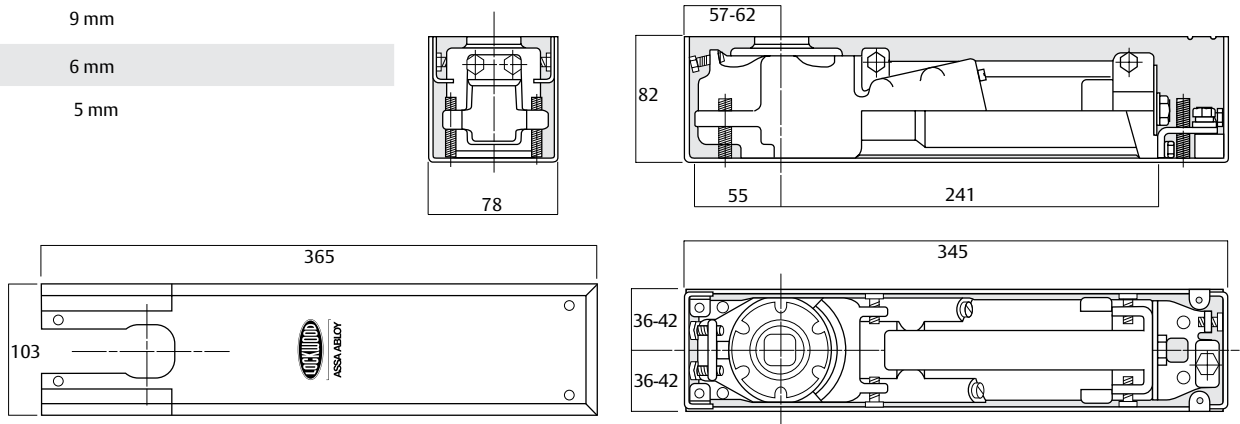
	Standard Inset	+5mm	+10mm	+15mm	+20mm	+25mm	+30mm
Part number	SP7750-60	SP7750-60-5	SP7750-60-10	SP7750-60-15	SP7750-60-20	SP7750-60-25	SP7750-60-30

7750 Series Floor Closer

Limiting Dimensions

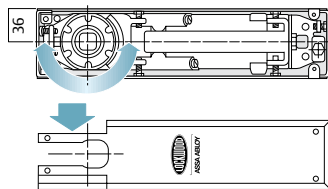
Adjustments within Cement Box

Vertical	9 mm
Side	6 mm
Front	5 mm

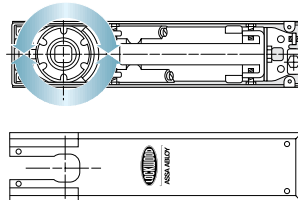


Universal Mounting

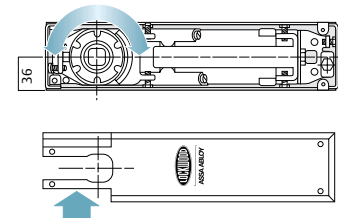
LEFT HAND



DOUBLE ACTION

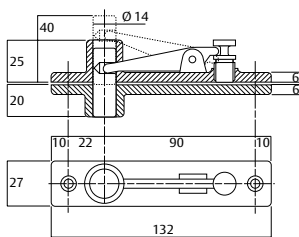


RIGHT HAND



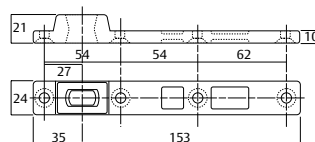
Spare Parts

SP7750-20



Double acting top pivot

SP7750-10

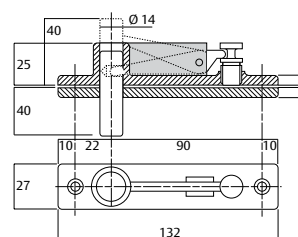


Reversible bottom arm in steel for double action doors.

SP7750-25



FIRE RATED

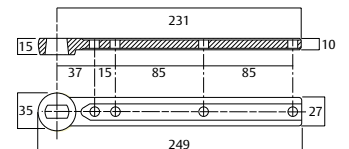


Double acting top pivot

SP7750-15

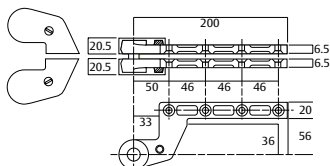


FIRE RATED



Bottom arm in steel for double action doors.

7750-30SIL



Top pivot in steel for left or right doors
36 mm offset. Maximum door weight 250kgs.

Keeler Hardware

telephone +61 2 8966 5966
www.keelerhardware.com.au



8800 Series Floor Closer

The Lockwood 8800 Series Floor Closers are designed to provide door control on manually operated double action doors in a wide range of commercial applications. The mounting kit provided with the Lockwood 8800 Series will suit glass, timber and aluminium frame door construction as standard.

Features:

- 2, 3 and 4 Power
- Non Hold Open
- 90° & 105° Hold Open
- Adjustable Pivot Inserts
- Pivot Door Sets
- Lockwood Guaranteed

Features & Specifications:

Door Width

Up to 1150mm (refer to selection procedure)

Door Weight

Up to 120kg as standard

Door Thickness

Minimum for timber 32 mm

Door Control

Two independent adjustment valves provide full hydraulic control from 130° to 15° of closing and 15° to 0° of latching.

Door Frame Type

Timber/aluminium/steel

Non Hold Open & Hold Open Versions

Available in both Non Hold Open & Hold Open versions Mechanical Hold Open 90° and 105° in separate units.

Door Adjustment

The Lockwood 8800 is positionally adjustable for a height of 4mm, a width of 10mm, a length of 9mm.

Cover Plate Finishes

Stainless Steel	SSS
Gold	GLD
Polished Stainless Steel	PSS
Other finishes on application	



Additional Features:

Interchangeable extended pivot inserts ranging from +5 to +35mm. This range will accommodate applications such as threshold, carpeted floors or situations where additional clearance between the door & floor are required (see page 6).

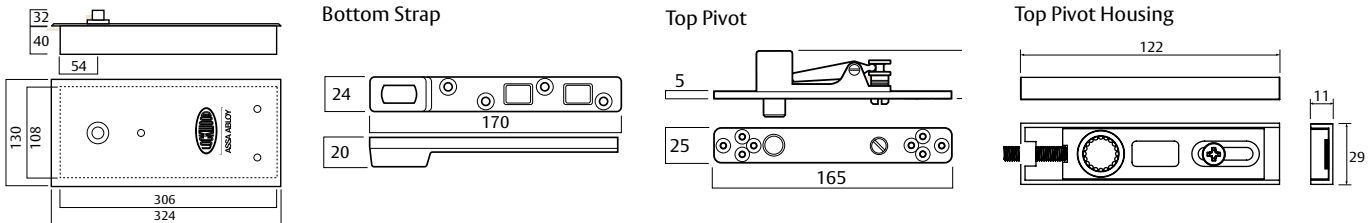
Universal off set pivot sets for flush closing single action door applications (SP844-30).

Pivot Door Sets:

Suitable for door applications where a free swing pivot door is required. Consists of retractable top pivot set with heavy duty bottom pivot and strap. Suitable for aluminium, glass and timber doors (see page 7).

8800 Series Floor Closer

Limiting Dimensions



8800 Series Product Range

Non Hold Open

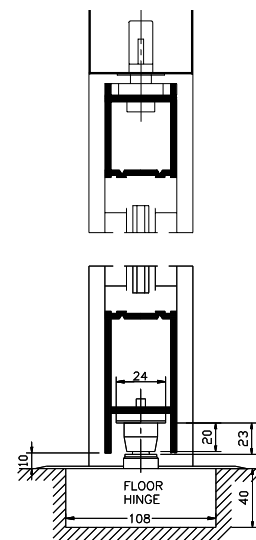
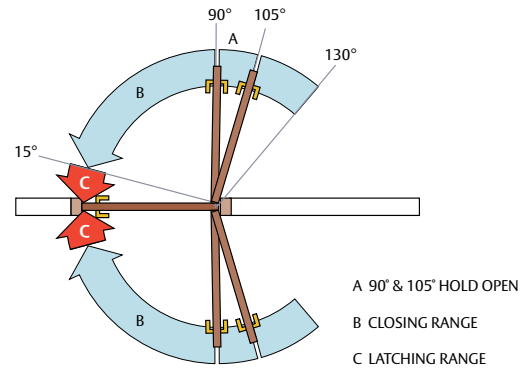
8842NSSS	Size 2	Standard Floor Spring Non Hold Open.
8843NSSS	Size 3	Standard Floor Spring Non Hold Open.
8844NSSS	Size 4	Standard Floor Spring Non Hold Open.

105° Hold Open

8842H105SSS	Size 2	Standard Floor Spring 105° Hold Open.
8843H105SSS	Size 3	Standard Floor Spring 105° Hold Open.
8844H105SSS	Size 4	Standard Floor Spring 105° Hold Open.

90° Hold Open

8842H90SSS	Size 2	Standard Floor Spring 90° Hold Open.
8843H90SSS	Size 3	Standard Floor Spring 90° Hold Open.
8844H90SSS	Size 4	Standard Floor Spring 90° Hold Open.

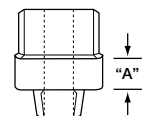


Size Selection Chart

Spring Size	Door Width	Max Door Weight	Closing Torque
2	850 mm	120 kgs	20 Nm
3	950 mm	120 kgs	27 Nm
4	1100 mm	120 kgs	39 Nm

Extended Spindle Range

	Standard Inset	+5mm	+10mm	+15mm	+20mm	+25mm	+30mm
Part number	SP884-60	SP884-60-5	SP884-60-10	SP884-60-15	SP884-60-20	SP884-60-25	SP884-60-30
3° Left Hand Offset							
Part number	SP884-60LH	SP884-60-5LH	SP884-60-10LH	SP884-60-15LH	SP884-60-20LH	SP884-60-25LH	SP884-60-30LH
3° Right Hand Offset							
Part number	SP884-60RH	SP884-60-5RH	SP884-60-10RH	SP884-60-15RH	SP884-60-20RH	SP884-60-25RH	SP884-60-30RH



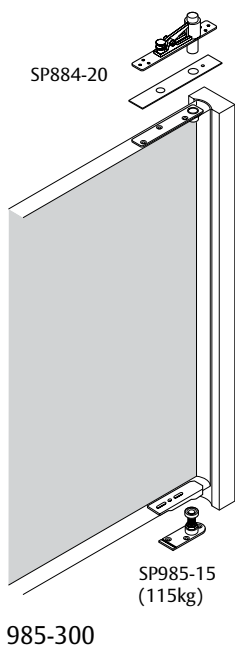
Pivot Door Sets

Suitable for door applications where a free swing pivot door is required. Consists of retractable top pivot set with heavy duty bottom pivot and strap. Suitable for Aluminium, Timber and Glass Doors.

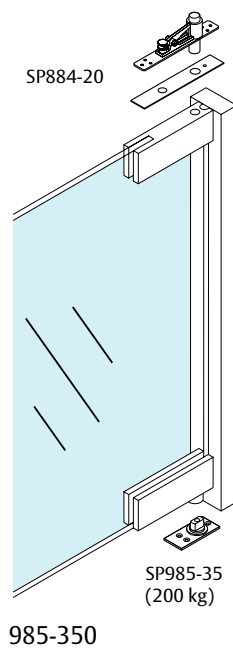
Pivot Door Set Product Range

Part Number	Description
985-300	Aluminium or Timber Door Pivot Kit
985-350	Glass Door Pivot Kit
985-400	Heavy Door Pivot Kit

Aluminium or Timber Door Pivot Kit



Glass Door Pivot Kit



Heavy Door Pivot Kit

